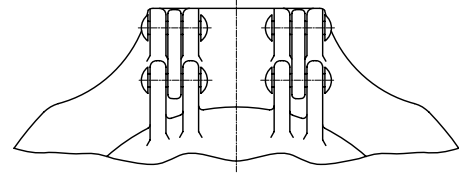
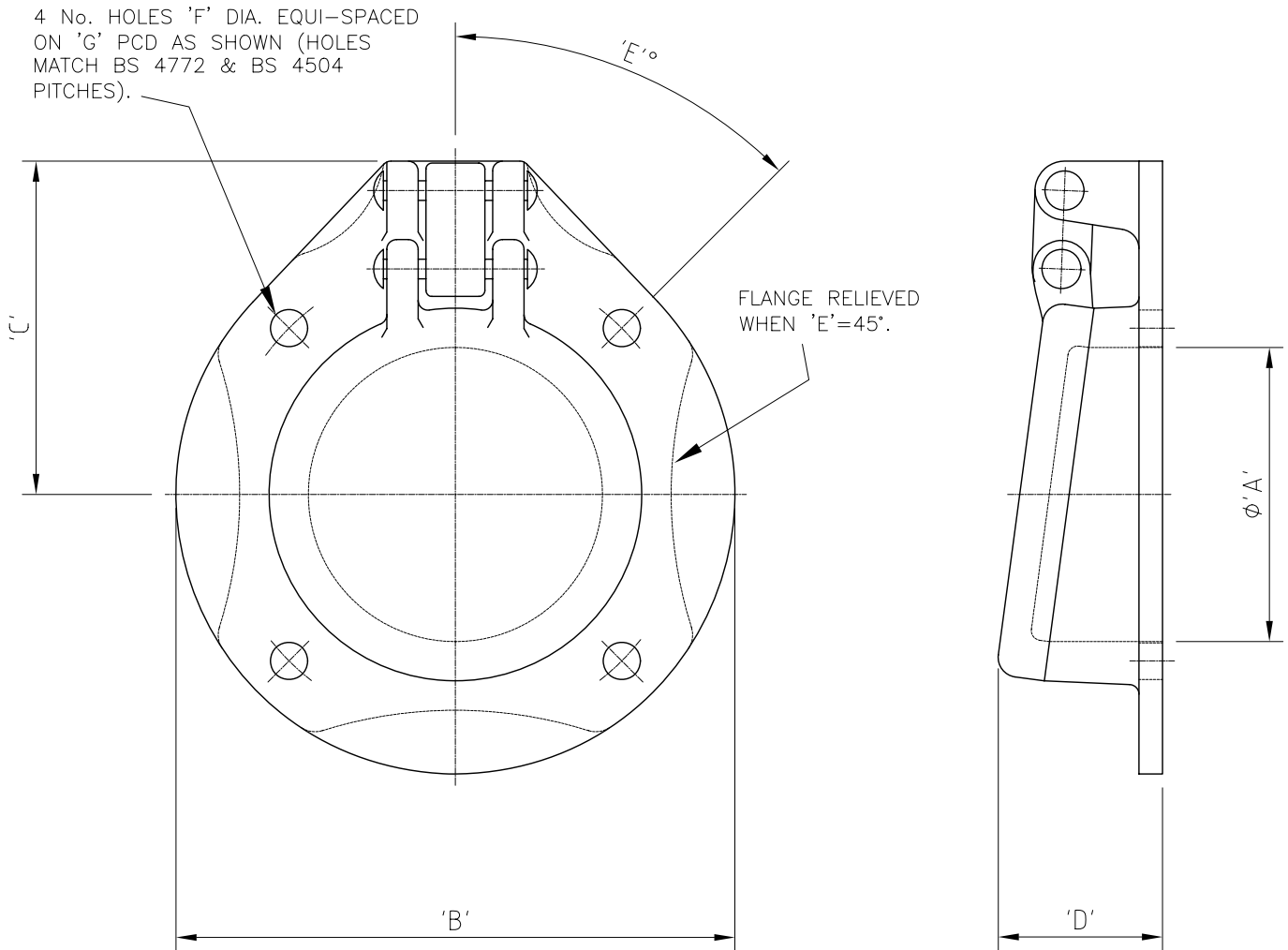


DUCTILE IRON FLAP VALVES – WALL OR FLANGE MOUNTED



HINGE ARRANGEMENT FOR 300MM SIZES & ABOVE



MATERIAL SPECIFICATION

FLAP VALVE BODY	DUCTILE IRON BS EN 1563 GR 500 / 7
FLAP VALVE DOOR	DUCTILE IRON BS EN 1563 GR 500 / 7
HINGE PIN	STAINLESS STEEL BS EN 10088 1.4310
HINGE LINKS (80 - 250)	DUCTILE IRON BS EN 1563 GR 500 / 7
HINGE LINKS (300 - 600)	STEEL BS EN 10113
SEALING RING	NICKEL IRON (Ni - Fe)
HINGE BUSH	PHOSPER BRONZE

FLAP VALVE DIMENSION TABLE						
'A'	'B'	'C'	'D'	'E'	'F'	'G'
80	200	125	75	22.5	19	160
100	220	135	75	22.5	19	180
150	285	170	80	22.5	23	240
200	340	210	85	45	23	295
250	400	235	90	45	28	355
300	460	280	85	45	28	410
350	540	325	85	33.75	28	470
400	580	335	100	33.75	31	525
450	640	375	100	45	31	585
500	715	400	100	45	34	650
600	640	450	115	45	37	770

DESIGNED TO WITHSTAND SEATING HEADS UP TO 6 METRES



SUPPLIERS OF
PENSTOCKS TO THE
WATER INDUSTRY

42 CROSSGATE ROAD
PARK FARM IND EST
REDDITCH, WORCESTERSHIRE
B98 7SN
TELE: 01527 517542
FAX: 01527 518087

Due to our continuous product development policy we reserve the right to modify designs or dimensions