

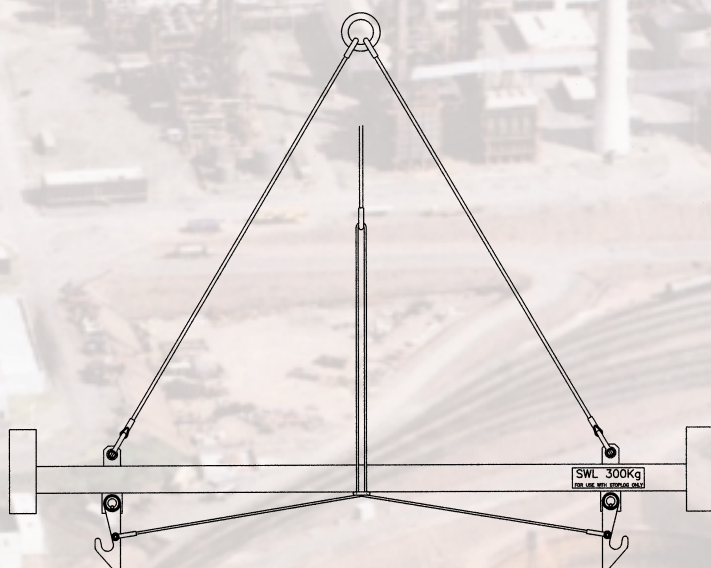
Series SL-LE

STOPLOG LIFTING EQUIPMENT

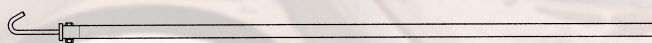
The series SL-LE has been designed for the safe and effective handling of stoplogs.

Advantages

- Cost effective lifting solutions
- Lifting poles - light weight and easy to handle
- Lifting beams - semi-automatic for safe handling of larger logs
- Robust construction



Lifting Beam



Lifting Pole

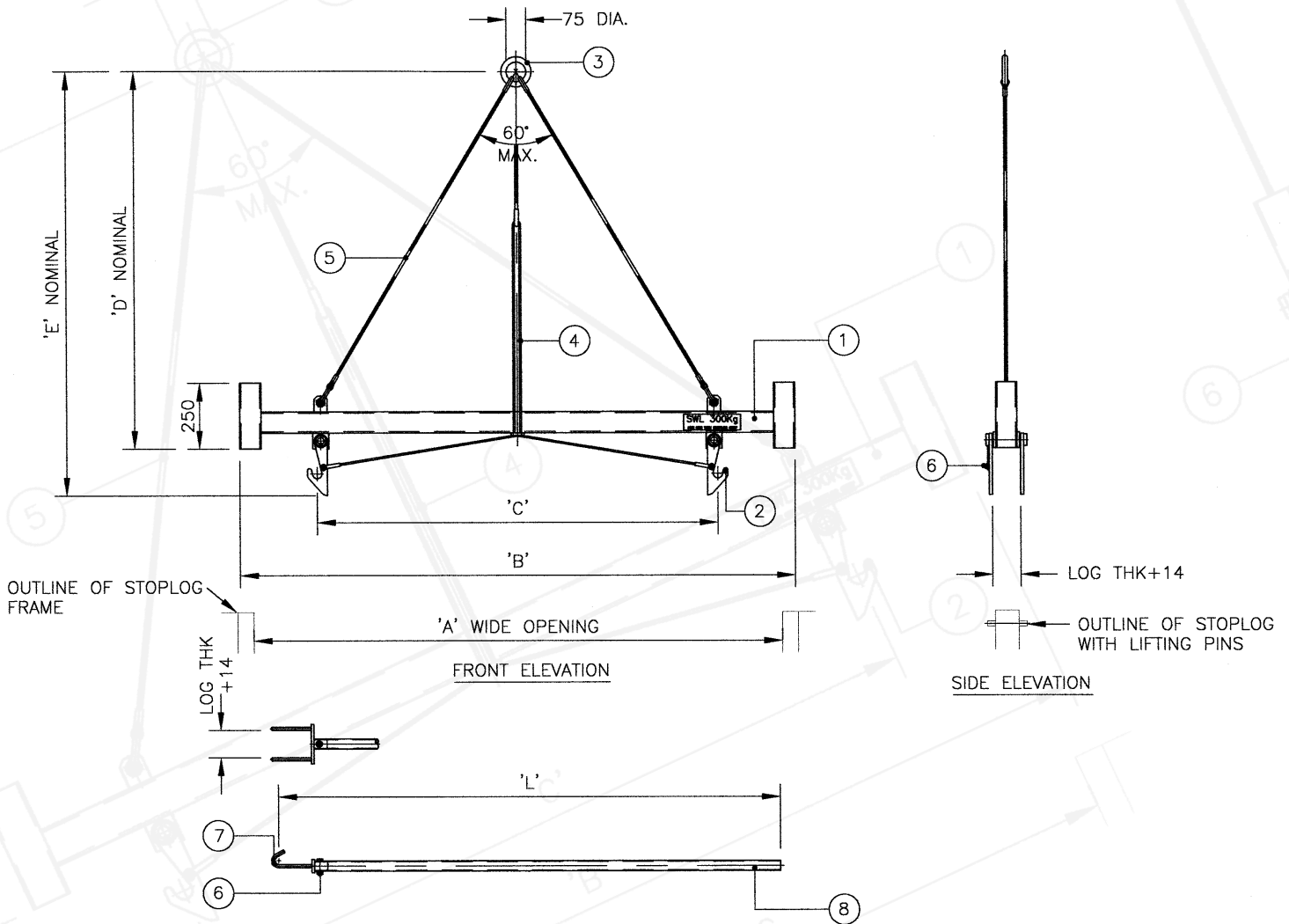


Features

- Lifting beams complete with self lubricating bronze bushes
- Lifting poles suitable for manual operation

Specifications

SERIES SL-LE STOP LOG LIFTING EQUIPMENT



Options

Operation:	Lifting poles, max. log weight 25kgs Lifting beam, log weight above 25kgs
Size Range:	To suit opening width of stoplog
Storage:	Racks for logs and lifting equipment

Dimensions and Weights

'A'	'B'	'C'	'D'	'E'	'L'	WEIGHT (KG)	
						BEAM	POLE
1000	1104	460	573	750	1000	37	4
2000	2104	1460	1440	1615	2000	48	5
2500	2604	1960	1875	2050	2500	54	5.5
3000	3104	2460	2305	2485	3000	60	6

The above table illustrates a small section of the size range.
Any size between 1000mm and 3000mm is available on request.
Smaller are available on request

Construction Materials

ITEM	DESCRIPTION	MATERIAL
1	Lifting Beam	Galvanised Mild Steel, BS 4360 Gr 43A
2	Lifting Hooks	Galvanised Mild Steel, BS 4360 Gr 43A
3	Lifting Ring	Galvanised Mild Steel, BS 4360 Gr 43A
4	Rope Assembly	Nylon Rope
5	Rope Assembly	Wire Rope
6	Fasteners	Stainless Steel, BS 6105, Gr A4
7	Hooks	Stainless Steel, BS 970, Gr 316
8	Lifting Pole	Aluminium