



SUPPLIERS OF PENSTOCKS TO THE WATER INDUSTRY

Series DHFV

RECTANGULAR FABRICATED WALL MOUNTING FLAP VALVES

400mm Square to 2000mm Square Apertures

The series DHFV is a high duty range of fabricated wall mounted flap valves suitable for flood alleviation and prevention of reverse flow. The range of flap valves are provided with a resilient frame seal for use with a wide variety of media for a static on-seat heads of 6 metres

Advantages

- Lightweight design - reduced weight when compared to the cast iron equivalent offers easier handling, installation and reduced civil work
- Low head loss characteristics
- Available in corrosion resistant materials:
 - Long Life Performance
 - Low Maintenance Costs
 - No Protective Coatings Required
- Robust construction ensures shock loading is safely absorbed
- A cost effective solution for high duty applications



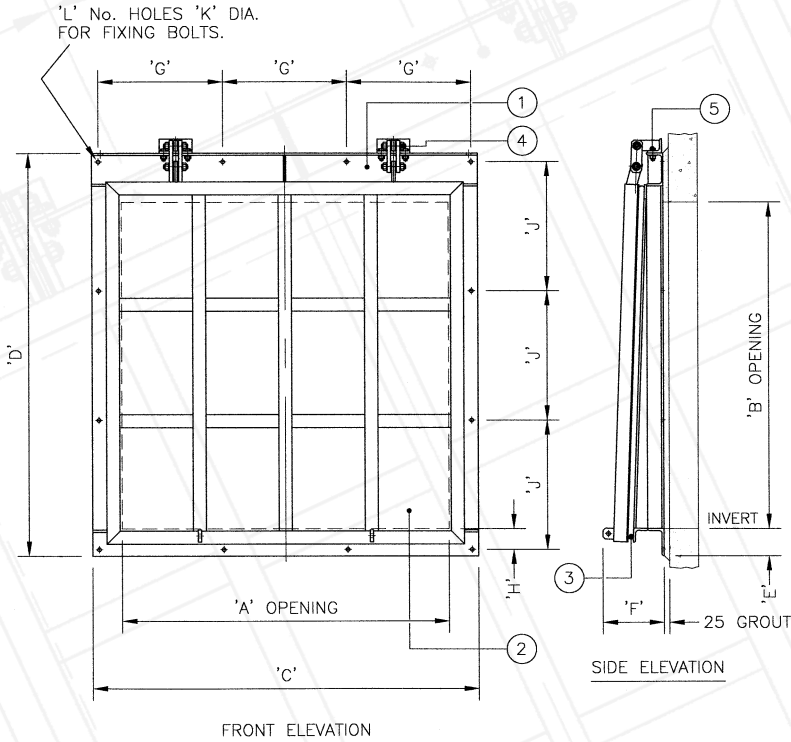
Features

- 6 metre on-seating heads
- Mechanical hinge system with self lubricating bronze bearings
- Double 'D' resilient sealing arrangement
- Higher design heads are available
- Counter-balance option is available to minimise head loss through the valve
- Centralised lubrication facility available as an option

Specifications

SERIES DHFV WALL MOUNTING RECTANGULAR FLAP VALVES

Size Range: 400mm Square to 2000mm Square Apertures



Operating Duty

Application:	Prevents reverse flow
Type of Mounting:	Wall
Type of Media:	Water and Sewage
Operating Head:	6 Metres on-seating

Options

Design Heads:	Higher head designs available
Size Range:	Any size from 400mm to 2000mm in square or rectangular format
Head Loss:	Counter balanced doors

Construction Materials

ITEM	DESCRIPTION	MATERIAL
1	Frame	Mild Steel, BS 4360 Gr 43A Stainless Steel, BS 970 Gr 304 Stainless Steel, BS 970 Gr 316
2	Door	Mild Steel, BS 4360 Gr 43A Stainless Steel, BS 970 Gr 304 Stainless Steel, BS 970 Gr 316 HMWP
3	Seals	Neoprene
4	Hinge Pins	Stainless Steel, BS 970 Gr 316
5	Fasteners	Stainless Steel, BS 6105, Gr A4

Dimensions and Weights

'A'	'B'	'C'	'D'	'E'	'F'	'G'	'H'	'J'	'K'	'L'	WEIGHT (KG)
400	400	612	595	100	270	286	80	320	17	8	80
500	500	712	795	100	270	336	80	370	17	8	68
600	600	812	895	100	270	386	80	420	17	8	70
700	700	912	995	100	270	436	80	470	17	8	82
800	800	1012	1095	100	270	486	80	520	17	8	95
900	900	1112	1195	100	270	536	80	570	17	8	105
1000	1000	1270	1352	125	275	403	95	427	17	12	375
1100	1100	1370	1452	125	275	437	95	461	17	12	415
1200	1200	1470	1552	125	275	470	95	494	17	12	450
1300	1300	1570	1652	125	275	503	95	527	17	12	490
1400	1400	1670	1752	125	275	537	95	561	17	12	525
1500	1500	1770	1852	125	275	570	95	594	17	12	570
1800	1800	2120	2177	150	320	515	120	527	17	16	850
2000	2000	2320	2377	150	320	577	120	577	17	16	945

The above table illustrates a small section of the size range.
Any size between 400mm and 2000mm is available on request.



SUPPLIERS OF PENSTOCKS TO THE WATER INDUSTRY

Midland Valves

42 Chaddesley Close | Lodge Park | Redditch | Worcestershire | B98 7ND
Tel: 01527 517542 | Fax: 01527 518087 | Email: mike@midlandvalves.fsnet.co.uk