



SUPPLIERS OF PENSTOCKS TO THE WATER INDUSTRY

Series WEIR 20

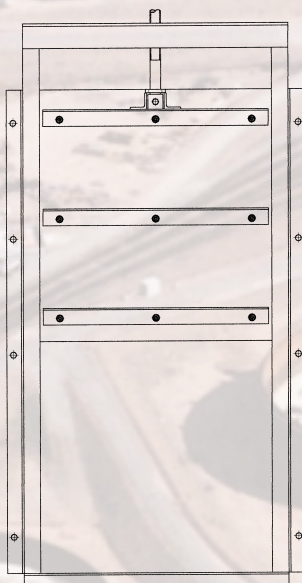
WALL MOUNTING WEIR PENSTOCKS

150mm Square to 850mm Square Apertures

The series WEIR 20 is a light duty range of weir penstocks suitable for the control and isolation of water and sewage. The range of penstocks are provided with side and invert seals for on-seat heads upto door depth.

Advantages

- Lightweight design - reduced weight when compared to the cast iron equivalent offers easier handling, installation and reduced civil work
- Low friction seals ensures operator sizes are kept to a minimum significantly reducing operating costs
- Available in corrosion resistant materials:
 - Long Life Performance
 - Low Maintenance Costs
 - No Protective Coatings Required
- Robust construction
- A cost effective solution for high duty applications



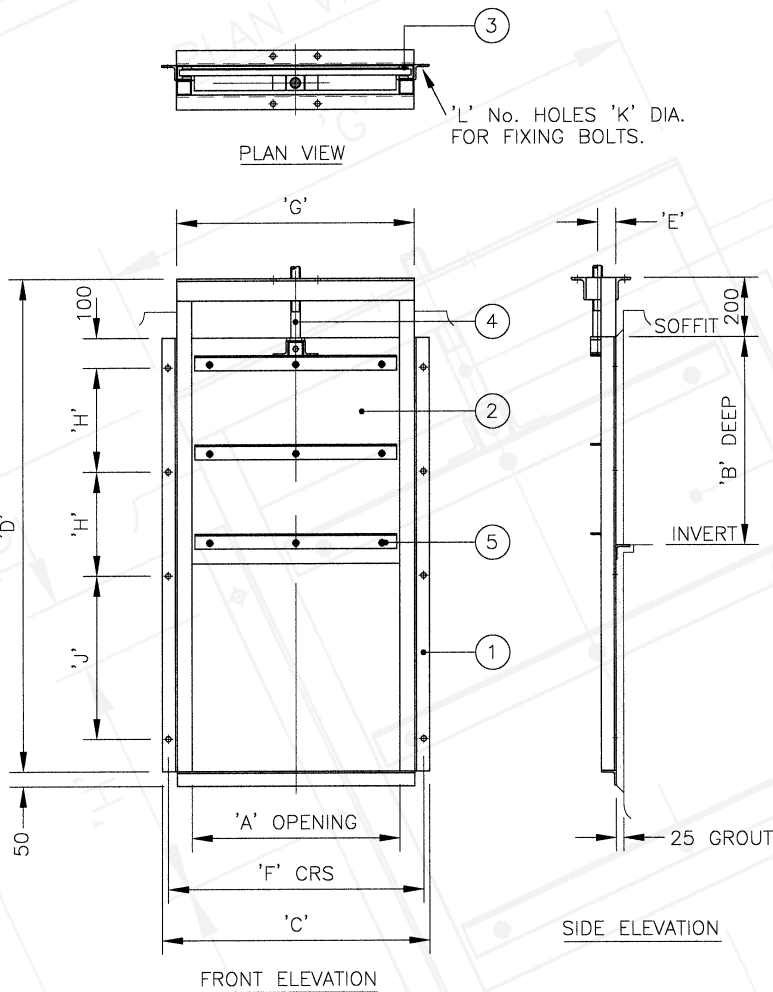
Features

- On-seating heads upto top of door
- Thrust transmitting yoke available at top of frame
- Rising or non-rising spindle applications for use with our extensive range of operating equipment
- Meets the requirements of BS7775 and DIN 19569-4 Penstocks Standards

Specifications

SERIES WEIR 20 WALL MOUNTING WEIR PENSTOCKS

Size Range: 150mm Square to 850mm Square Apertures



Operating Duty

Application:	Flow control and isolation
Type of Mounting:	Wall
Type of Media:	Water and Sewage
Operating Head:	Top of door On-seating

Options

Stem Types:	Rising and non-rising
Size Range:	Any size from 150mm to 850mm in square or rectangular format

Applicable Standards

BS 7775:1995, Specification for general purpose penstocks

Construction Materials

ITEM	DESCRIPTION	MATERIAL
1	Frame	Mild Steel, BS 4360 Gr 43A Stainless Steel, BS 970 Gr 304 Stainless Steel, BS 970 Gr 316
2	Door	HMWP with Reinforcement
3	Seals	Low Friction Polyolefin
4	Stem	Stainless Steel, BS 970 Gr 304 Stainless Steel, BS 970 Gr 316
5	Fasteners	Stainless Steel, BS 6105, Gr A4

Dimensions and Weights

'A'	'B'	'C'	'D'	'E'	'F'	'G'	'H'	'J'	'K'	'L'	WEIGHT (KG)
150	150	300	470	60	310	350	75	50	18	8	12
200	200	350	570	60	360	400	100	100	18	8	17
250	250	400	670	60	410	450	125	150	18	8	21
300	300	450	770	60	460	500	150	200	18	8	26
400	400	550	970	60	560	600	200	300	18	8	34
500	500	650	1170	60	660	700	250	400	18	8	40
600	600	750	1370	60	760	800	300	500	18	8	45
700	700	850	1570	60	860	900	350	600	18	8	67
800	800	950	1770	60	960	1000	400	700	18	8	80
850	850	1000	1870	60	1010	1050	425	750	18	8	89

The above table illustrates a small section of the size range. Any size between 150mm and 850mm is available on request.