

# *Series WM - 20*

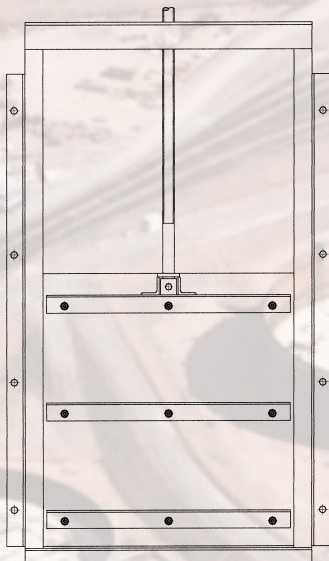
## **WALL MOUNTING PENSTOCKS**

### **150mm Square to 850mm Square Apertures**

The series WM - 20 is a light duty range of penstocks suitable for the control and isolation of water and sewage. The range of penstocks are provided with side, soffit and invert seals for 2 metre on-seat heads and off-seating upto door depth.

#### **Advantages**

- Lightweight design - reduced weight when compared to the cast iron equivalent offers easier handling, installation and reduced civil work
- Low friction seals ensures operator sizes are kept to a minimum significantly reducing operating costs
- Available in corrosion resistant materials:
  - Long Life Performance
  - Low Maintenance Costs
  - No Protective Coatings Required
- Flush invert design avoids pockets in chamber floor
- Compact design minimises invert rebate sizes
- Robust construction
- A cost effective solution for high duty applications

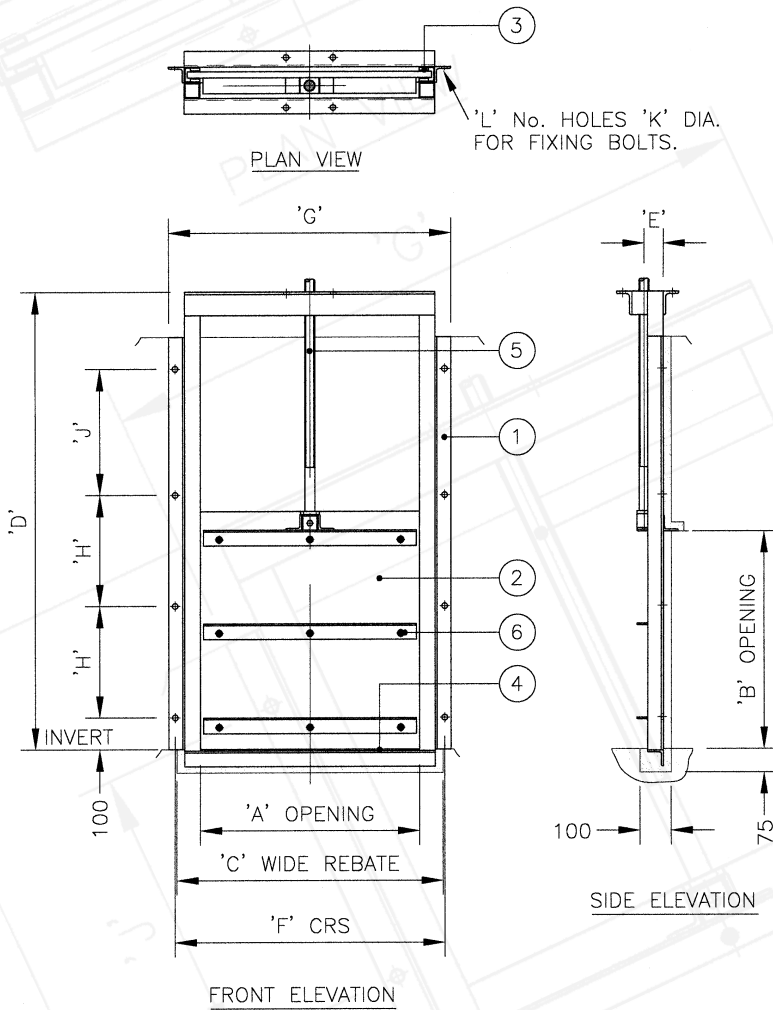


#### **Features**

- 2 metre on-seating and off-seating heads upto top of door
- Thrust transmitting yoke available at top of frame
- Rising or non-rising spindle applications for use with our extensive range of operating equipment
- Meets the requirements of BS7775 and DIN 19569-4 Penstocks Standards

# Specifications

## SERIES WM - 20 WALL MOUNTING PENSTOCKS Size Range: 150mm Square to 850mm Square Apertures



### Operating Duty

Application:	Flow control and isolation
Type of Mounting:	Wall with rebated invert
Type of Media:	Water and Sewage
Operating Head:	2 metres On-seating Top of door Off-seating

### Options

Mounting:	Side and invert wall mounting
Stem Types:	Rising and non-rising
Size Range:	Any size from 150mm to 850mm in square or rectangular format

### Applicable Standards

BS 7775:1995, Specification for general purpose penstocks

### Construction Materials

ITEM	DESCRIPTION	MATERIAL
1	Frame	Mild Steel, BS 4360 Gr 43A Stainless Steel, BS 970 Gr 304 Stainless Steel, BS 970 Gr 316
2	Door	HMWP with Reinforcement
3	Seals	Low Friction Polyolefin
4	Invert Seal	Neoprene
5	Stem	Stainless Steel, BS 970 Gr 304 Stainless Steel, BS 970 Gr 316
6	Fasteners	Stainless Steel, BS 6105, Gr A4

### Dimensions and Weights

'A'	'B'	'C'	'D'	'E'	'F'	'G'	'H'	'J'	'K'	'L'	WEIGHT (KG)
150	150	300	470	60	310	350	110	-	18	6	9
200	200	350	570	60	360	400	100	100	18	8	12
250	250	400	670	60	410	450	125	150	18	8	20
300	300	450	770	60	460	500	150	200	18	8	25
400	400	550	970	60	560	600	200	300	18	8	32
500	500	650	1170	60	660	700	250	400	18	8	43
600	600	750	1370	60	760	800	300	500	18	8	50
700	700	850	1570	60	860	900	350	600	18	8	60
800	800	950	1770	60	960	1000	400	700	18	8	77
850	850	1000	1870	60	1010	1050	425	750	18	8	90

The above table illustrates a small section of the size range. Any size between 150mm and 850mm is available on request.



SUPPLIERS OF PENSTOCKS TO THE WATER INDUSTRY

Midland Valves

42 Chaddesley Close | Lodge Park | Redditch | Worcestershire | B98 7ND  
Tel: 01527 517542 | Fax: 01527 518087 | Email: mike@midlandvalves.fsnet.co.uk