

Series WM - 30, 40, & 50

WALL MOUNTING PENSTOCKS

150mm Square to 2000mm Square Apertures

The series WM - 30, 40 & 50 is a high duty range of Penstocks suitable for the control and isolation of water and sewage. The range of penstocks are provided with side, soffit and invert seals for 6 metre and off-seating heads.

Advantages

- Lightweight design - reduced weight when compared to the cast iron equivalent offers easier handling, installation and reduced civil work
- Low friction seals ensures operator sizes are kept to a minimum significantly reducing operating costs
- Available in corrosion resistant materials:
 - Long Life Performance
 - Low Maintenance Costs
 - No protective Coatings Required
- Flush invert designed for ease of maintenance
- Compact design minimises invert rebate sizes
- Robust construction
- A cost effective solution for high duty applications



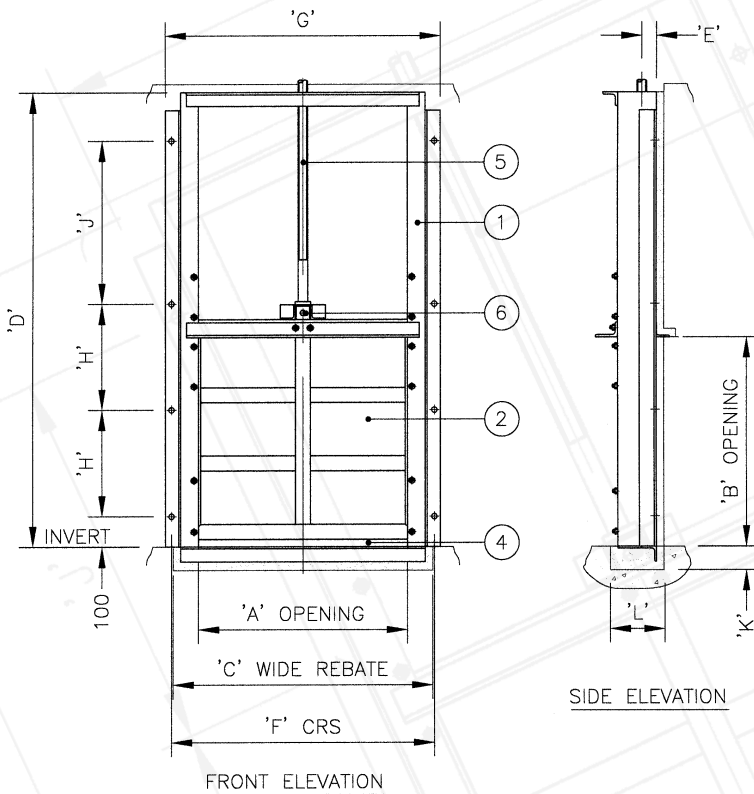
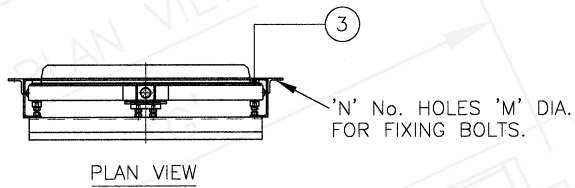
Features

- 6 metre on and off-seating heads
- Adjustable low friction pressure pads to ensure optimum sealing performance
- Thrust transmitting yoke available at top of frame
- Rising or non-rising spindle applications for use with our extensive range of operating equipment
- Meets the requirements of BS7775 and DIN 19569-4 Penstocks Standards

Specifications

SERIES WM - 30, 40 & 50 WALL MOUNTING PENSTOCKS

Size Range: 150mm Square to 2000mm Square Apertures



Operating Duty

Application:	Flow control and isolation
Type of Mounting:	Wall with rebated invert
Type of Media:	Water and Sewage
Operating Head:	6 Metres on-seating 6 Metres off-seating

Options

Mounting:	Side and Invert wall Mounting
Stem Types:	Rising and non-rising
Size Range:	Any size from 150mm to 200mm in square or rectangular format
Frame Type	Thrust Yoke

Applicable Standards

BS 7775:1995, Specification for general purpose penstocks

Construction Materials

ITEM	DESCRIPTION	MATERIAL
1	Frame	Mild Steel, BS 4360 Gr 43A Stainless Steel, BS 970 Gr 304 Stainless Steel, BS 970 Gr 316
2	Door	Mild Steel, BS 4360 Gr 43A Stainless Steel, BS 970 Gr 304 Stainless Steel, BS 970 Gr 316
3	Side Seals	Low Friction Polyolefin
4	Invert Seal	Neoprene
5	Stem	Stainless Steel, BS 970 Gr 304 Stainless Steel, BS 970 Gr 316
6	Fasteners	Stainless Steel, BS 6105, Gr A4

Dimensions and Weights

	'A'	'B'	'C'	'D'	'E'	'F'	'G'	'H'	'J'	'K'	'L'	'M'	'N'	WEIGHT (KG)
SERIES 30	150	150	320	470	49	328	370	75	50	75	180	18	8	31
	300	300	470	770	49	478	520	150	200	75	180	18	8	62
	400	400	570	970	49	578	620	200	300	75	180	18	8	83
	500	500	670	1170	49	678	720	250	400	75	180	18	8	104
	600	600	770	1370	49	778	820	300	500	75	180	18	8	125
SERIES 40	800	800	970	1770	49	978	1020	400	700	75	180	18	8	166
	1000	1000	1170	2190	53	1184	1240	333	890	85	180	22	10	294
SERIES 50	1200	1200	1370	2590	53	1384	1440	400	1090	85	180	22	10	353
	1500	1500	1702	3230	67	1750	1812	375	1380	105	225	27	12	637
	1800	1800	2002	3830	67	2050	2112	450	1680	105	225	27	12	785
	2000	2000	2202	4230	67	2250	2312	500	1880	105	225	27	12	850

The above table illustrates a small section of the size range.
Any size between 150mm and 2000mm is available on request.